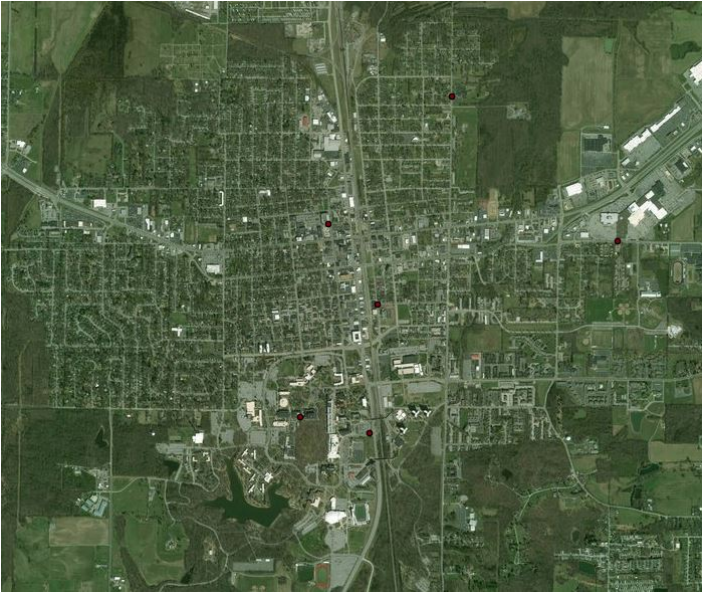


# PLANNING FOR PEOPLE & POLLINATORS IN CARBONDALE



## A WORKSHOP & LISTENING SESSION

**Date: Tuesday, June 5, 10:00 am - 2:00 pm**

**Location: SIU Carbondale, University Farms Classroom  
3373 W. Pleasant Hill Road, Carbondale, IL 62903**

The monarch butterfly and other important pollinators are in decline, but there are ways we can help—even in cities, towns, and suburbs. Southern Illinois University is working with scientists at the Field Museum in Chicago to refine mapping tools and strategies for creating monarch habitat in different contexts along the monarch's migration path. In this workshop, Museum scientists will introduce the project and hold a listening session to better understand the landscape in Carbondale. Come learn about this exciting project, offer your input, and see where you can plug in!

**A light lunch will be provided. Space is limited, registration required:  
email [missyh@siu.edu](mailto:missyh@siu.edu) or call 618-453-4551.**

To learn more about the Field Museum's monarch conservation work, visit: [fieldmuseum.org/monarchs](http://fieldmuseum.org/monarchs).