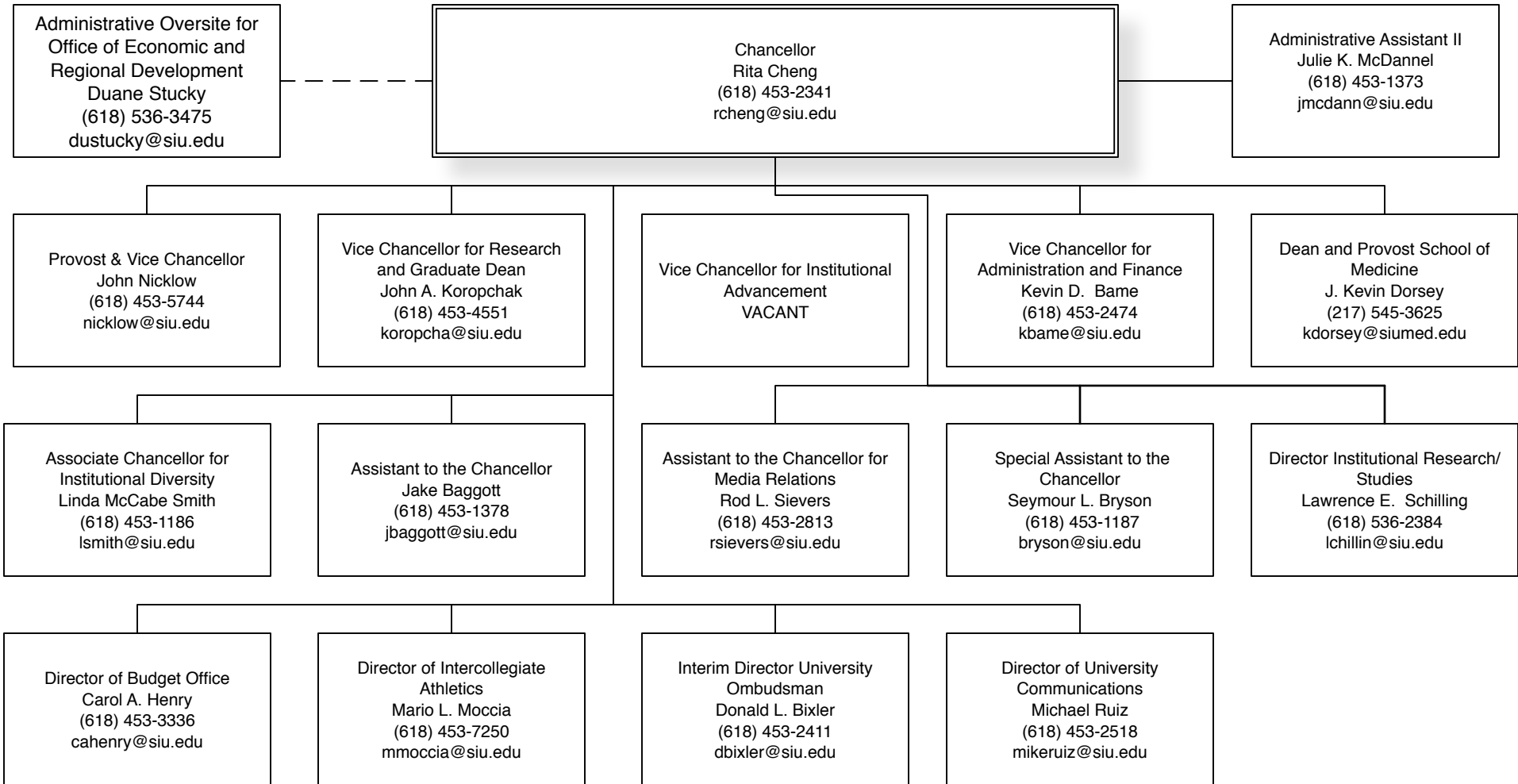


TABLE OF CONTENTS

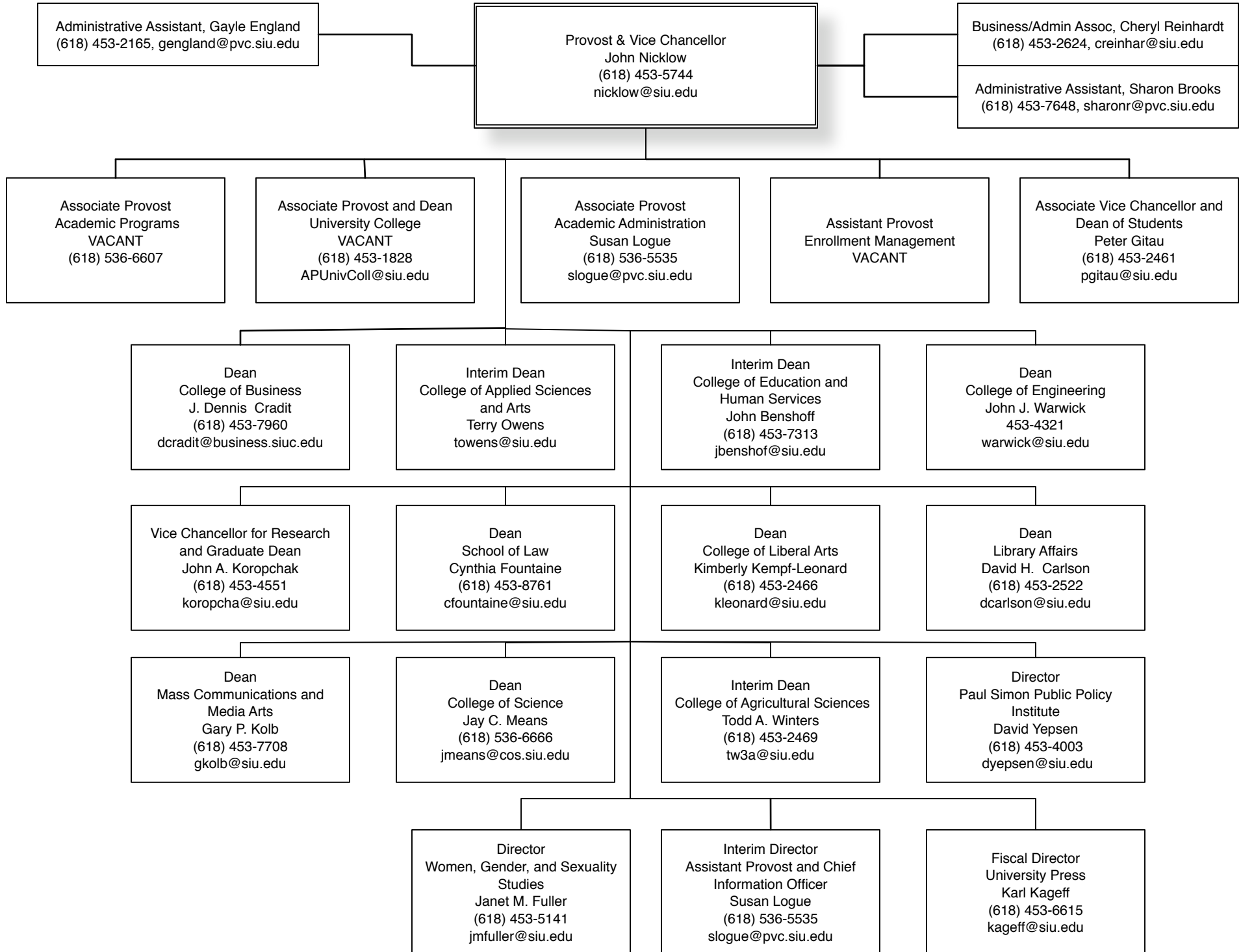
Office of the Chancellor	2
Provost and Vice Chancellor	3
Associate Provost for Academic Programs	4
Associate Provost for Academic Administration	5
Associate Vice Chancellor and Dean of Students	6
Assistant Vice Chancellor for Enrollment Management	7
University College	8
University Honors Program	9
College of Agricultural Sciences	10
College of Applied Sciences and Arts	11
College of Business	12
College of Education and Human Services	13
College of Engineering	14
School of Law	15
College of Liberal Arts	16
Library Affairs	17
College of Mass Communication and Media Arts	18
College of Science	19
Vice Chancellor for Research & Graduate Dean	20
Associate Vice Chancellor for Research & Director, ORDA	21
Vice Chancellor for Administration and Finance	22
Vice Chancellor for Institutional Advancement	23
Associate Vice Chancellor, Executive Director Development	24
Executive Director SIU Alumni Services	25
Associate Chancellor for Institutional Diversity	26
School of Medicine	27
Admin. Oversight for Office of Economic & Regional Development	28
Budget Office	29
Intercollegiate Athletics	30
University Communications	31

The SIU Carbondale organizational chart is compiled by the office of University Communications, 1220 Douglas Drive, Mail Code 6819. Please email or fax your corrections, questions, or updates to Michael Ruiz at mikeruiz@siu.edu, 618-453-2518, FAX: 618-453-1445.

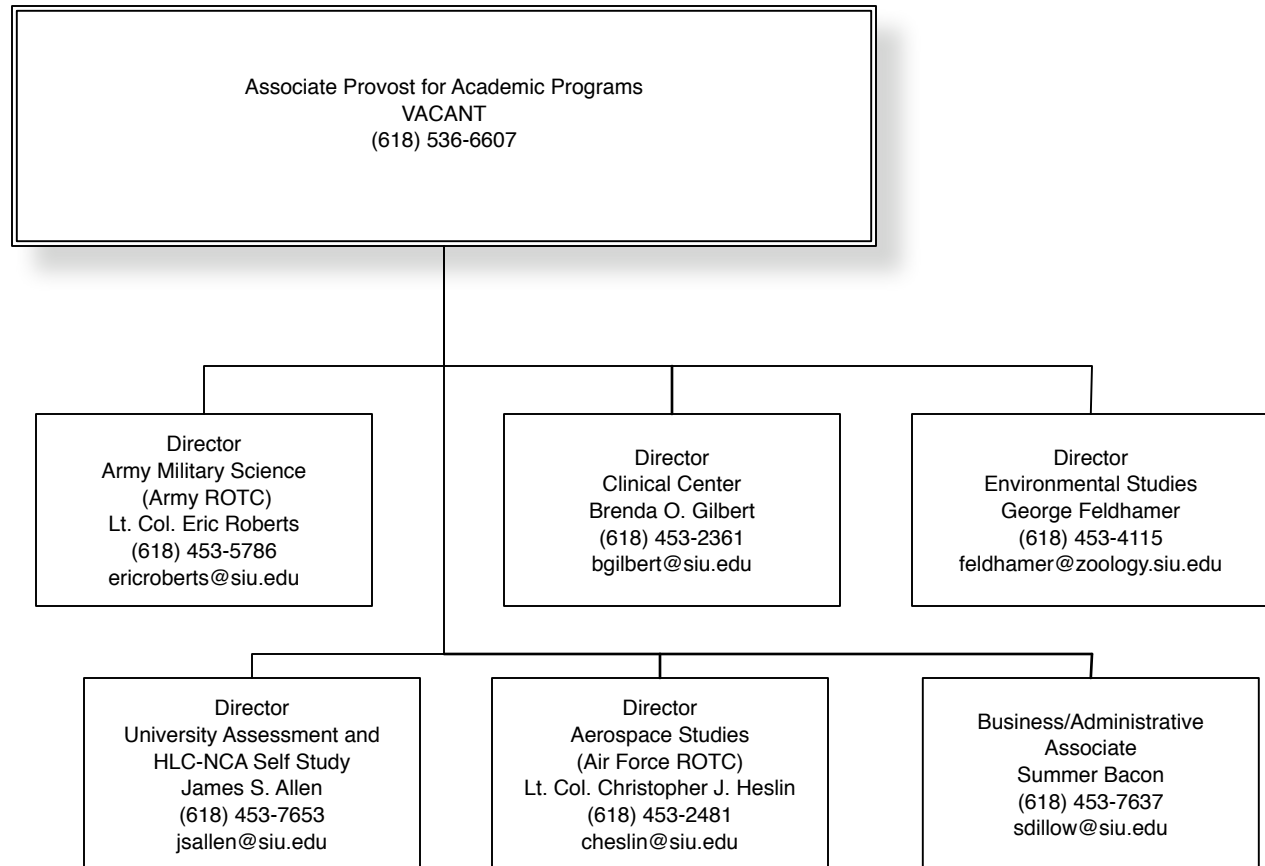
NOTICE: This chart is printed as a reference for University employees and students. It is neither an accounting of all of the employees in a particular unit, nor is it a complete picture or representation of the number, type, or titles of all employees reporting to a particular supervisor. If you need this type of information, please contact the unit or the Department of Human Resources.



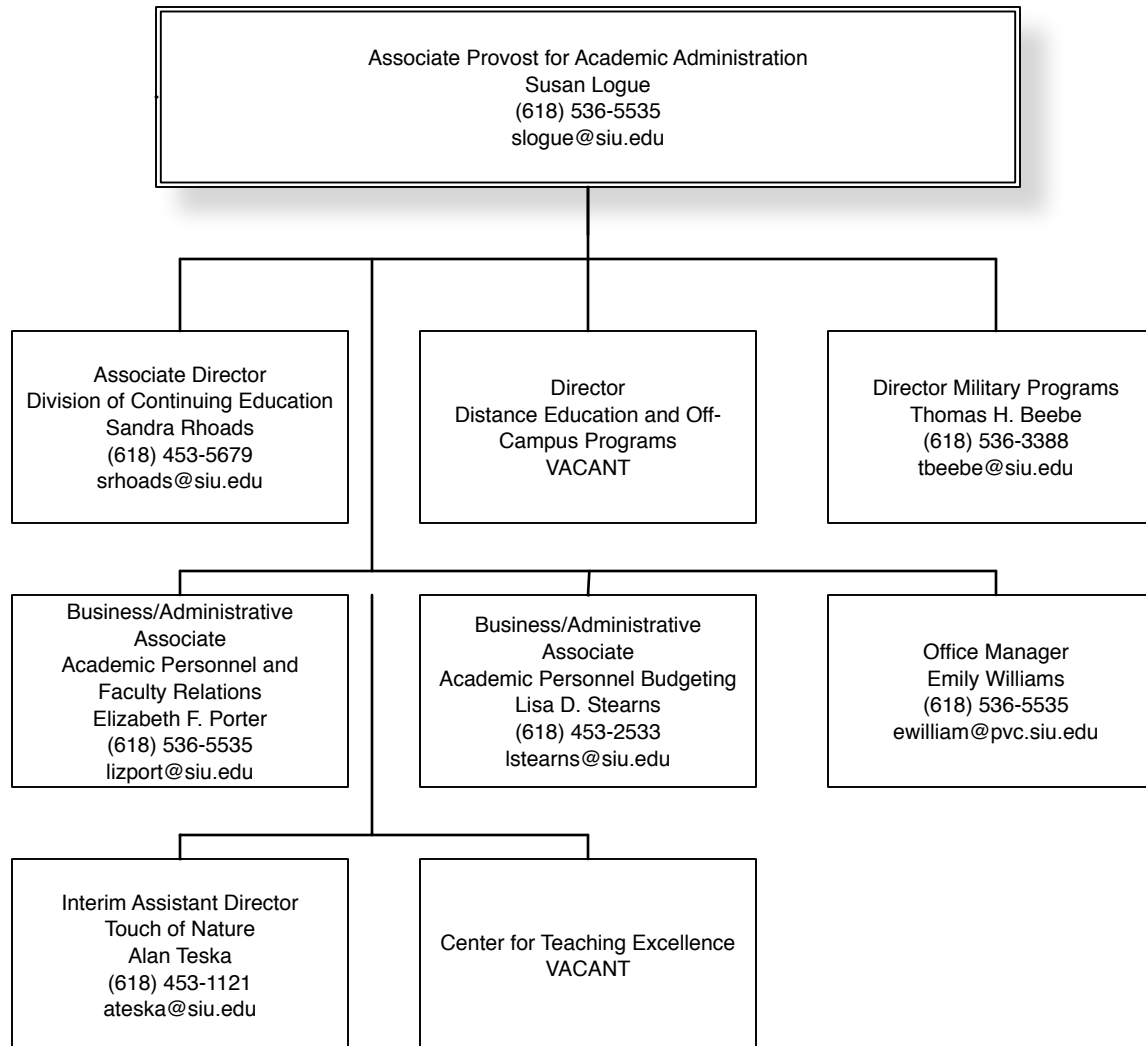
Reports to the Chancellor



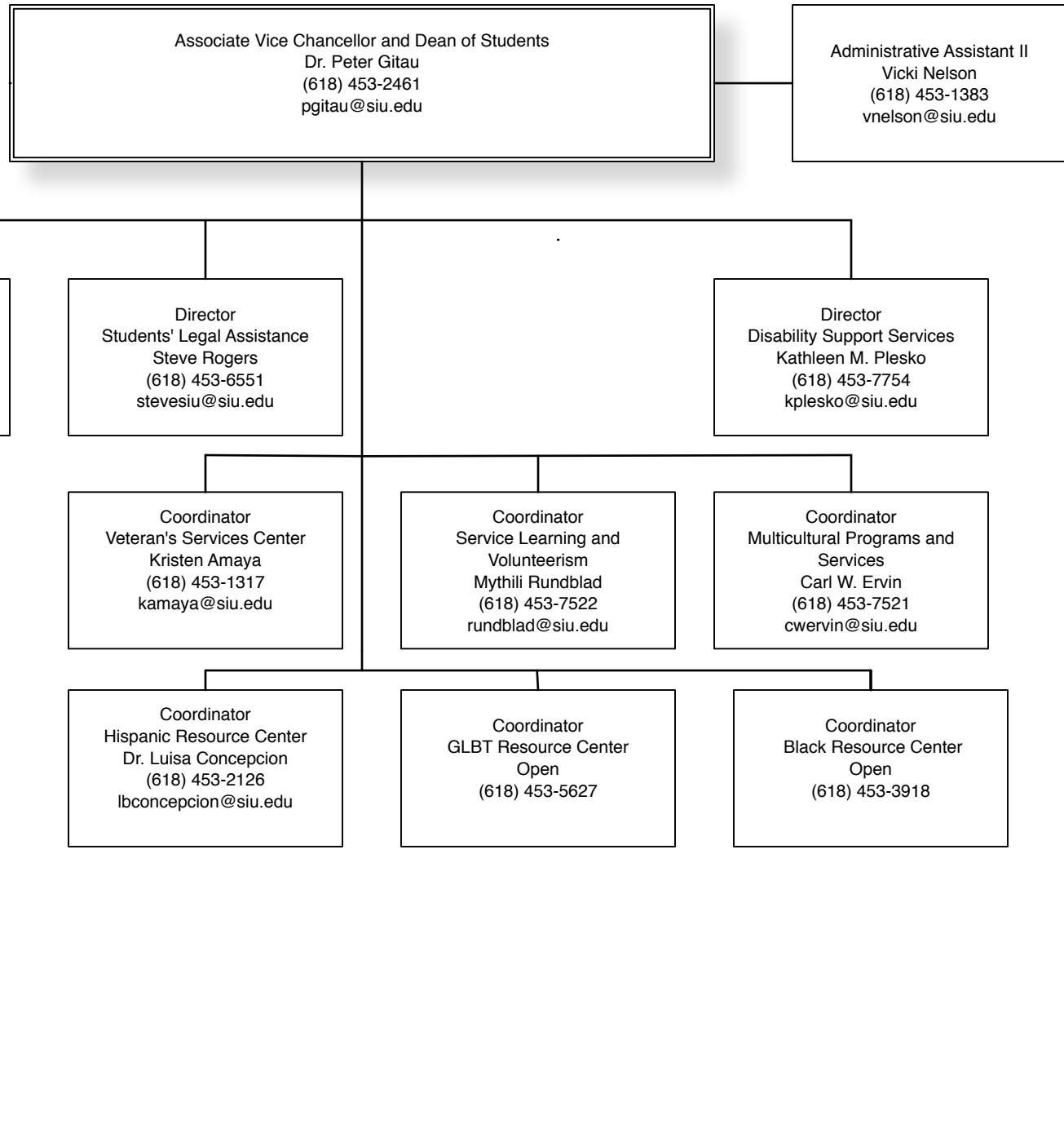
Reports to the Provost and Vice Chancellor



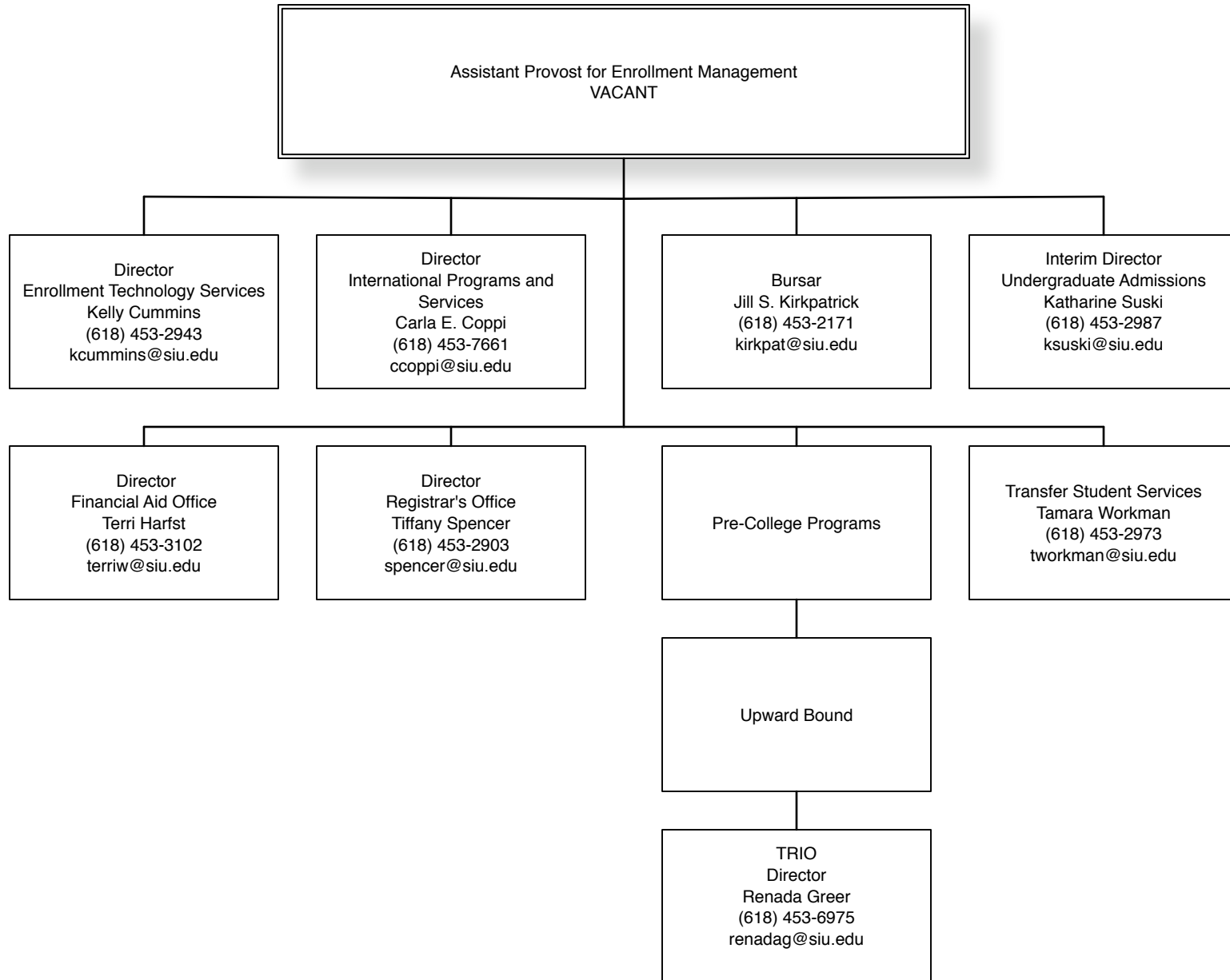
Reports to the Provost and Vice Chancellor



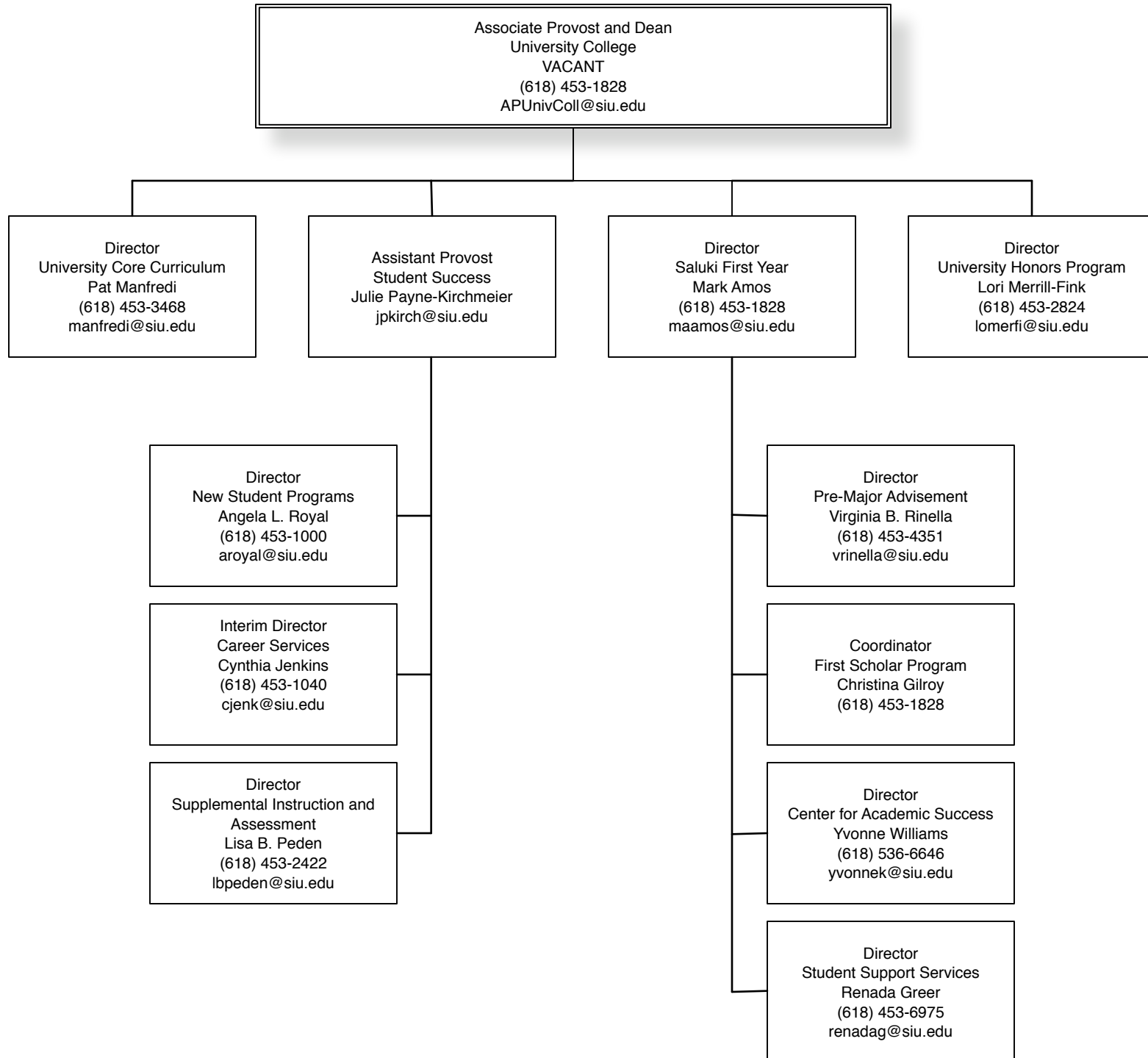
Reports to the Provost and Vice Chancellor



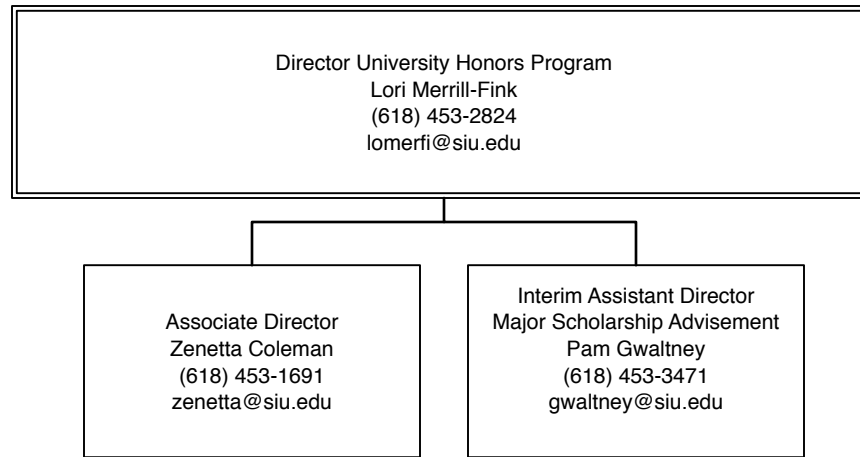
Reports to the Provost and Vice Chancellor



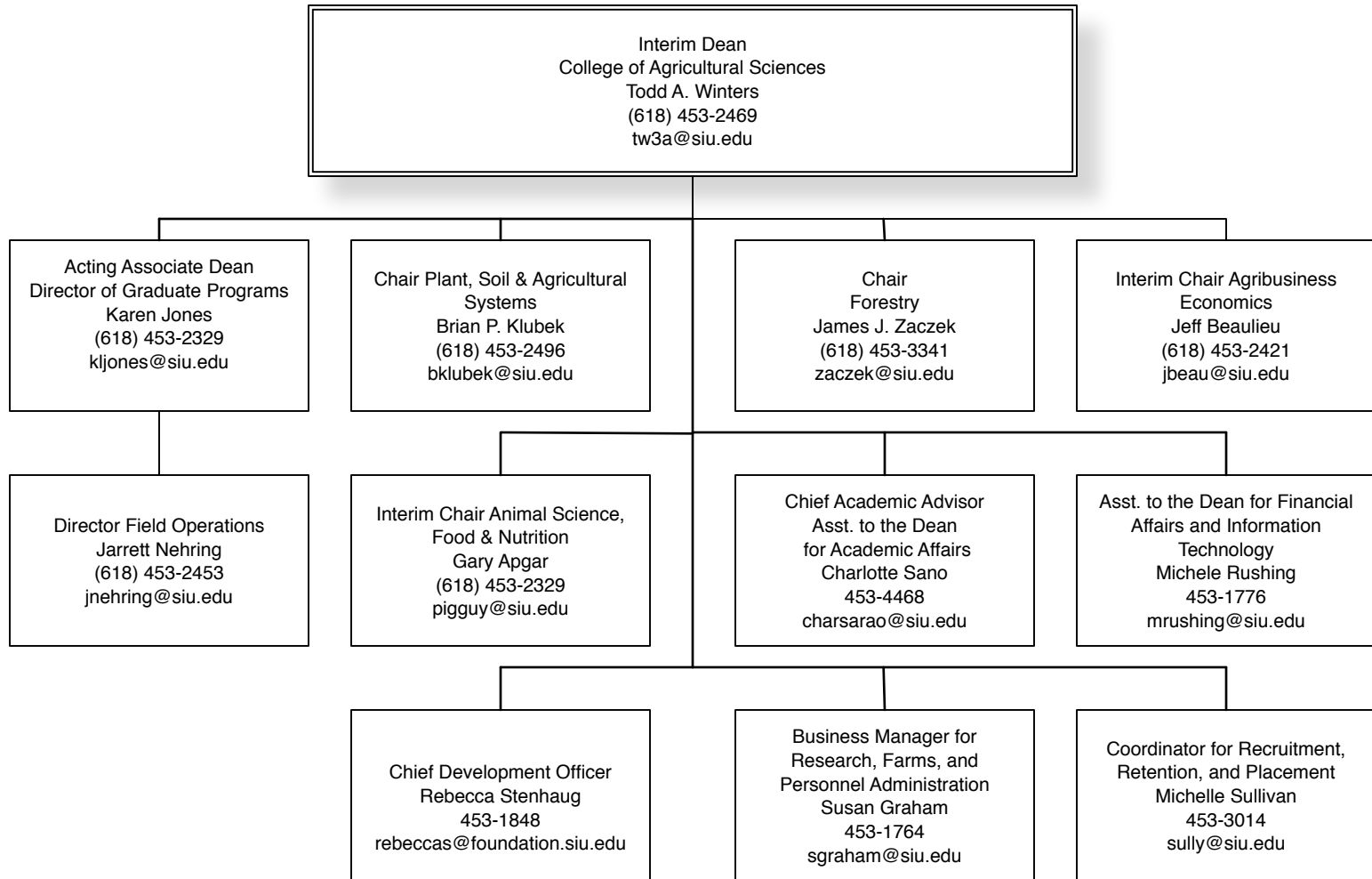
Reports to the Provost and Vice Chancellor



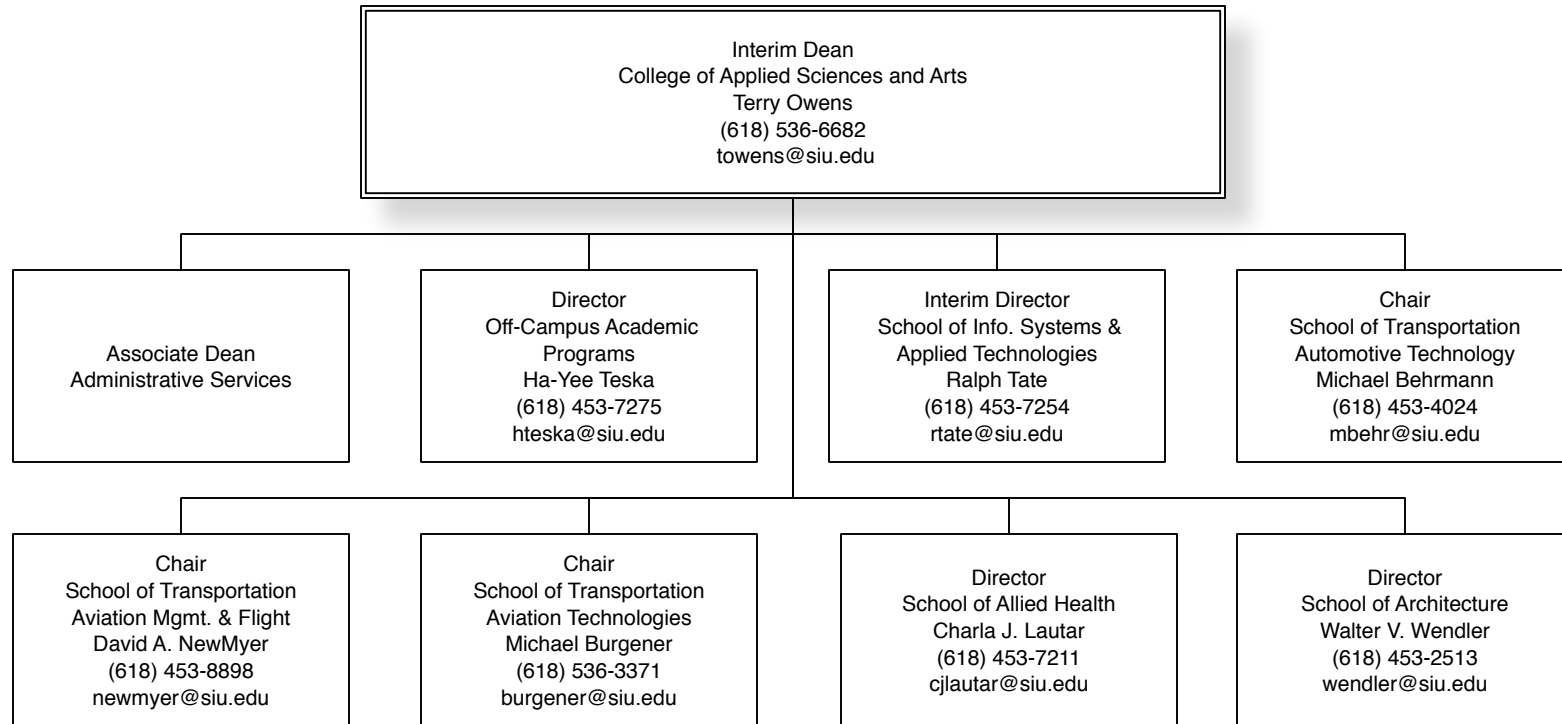
Reports to the Provost and Vice Chancellor



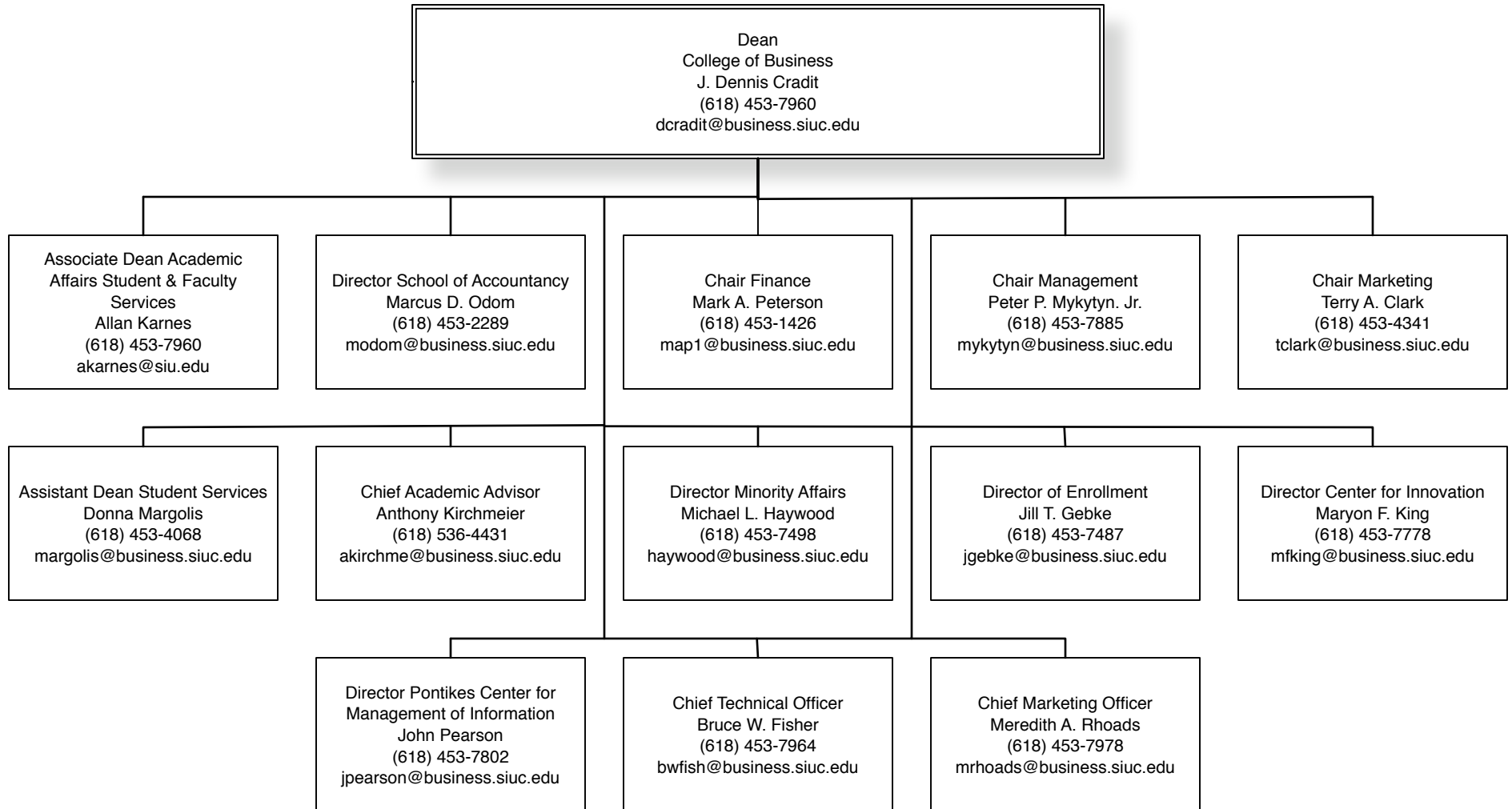
Reports to the Provost and Vice Chancellor



Reports to the Provost and Vice Chancellor

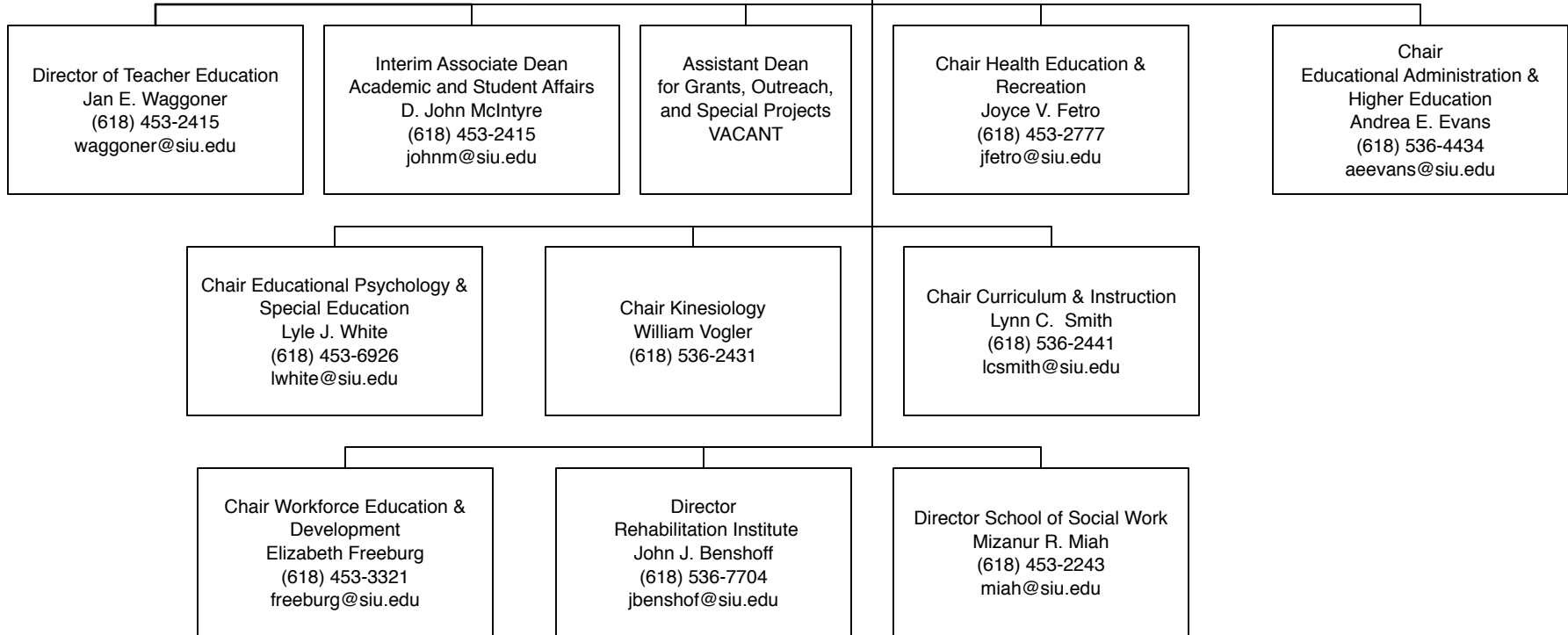


Reports to the Provost and Vice Chancellor

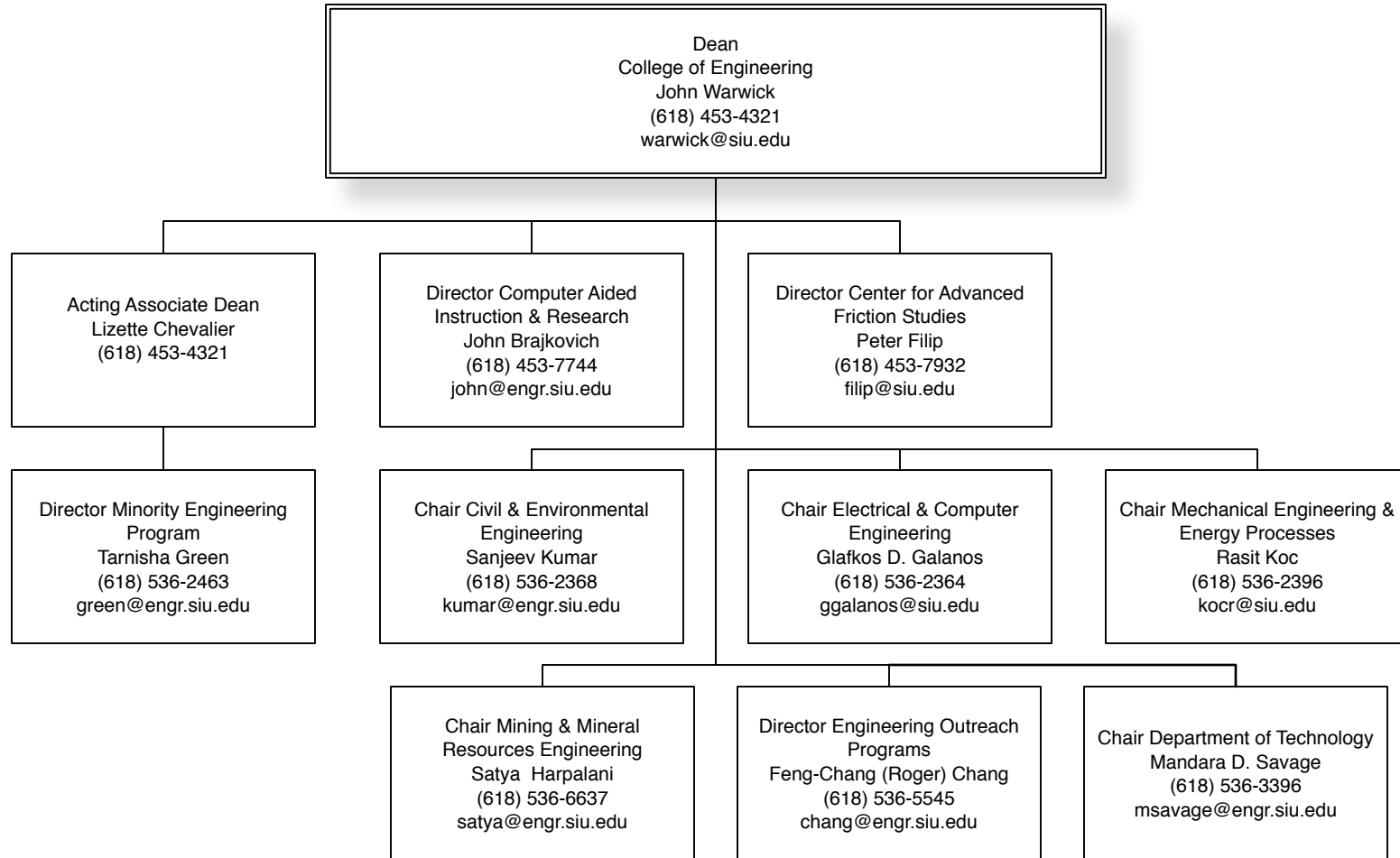


Reports to the Provost and Vice Chancellor

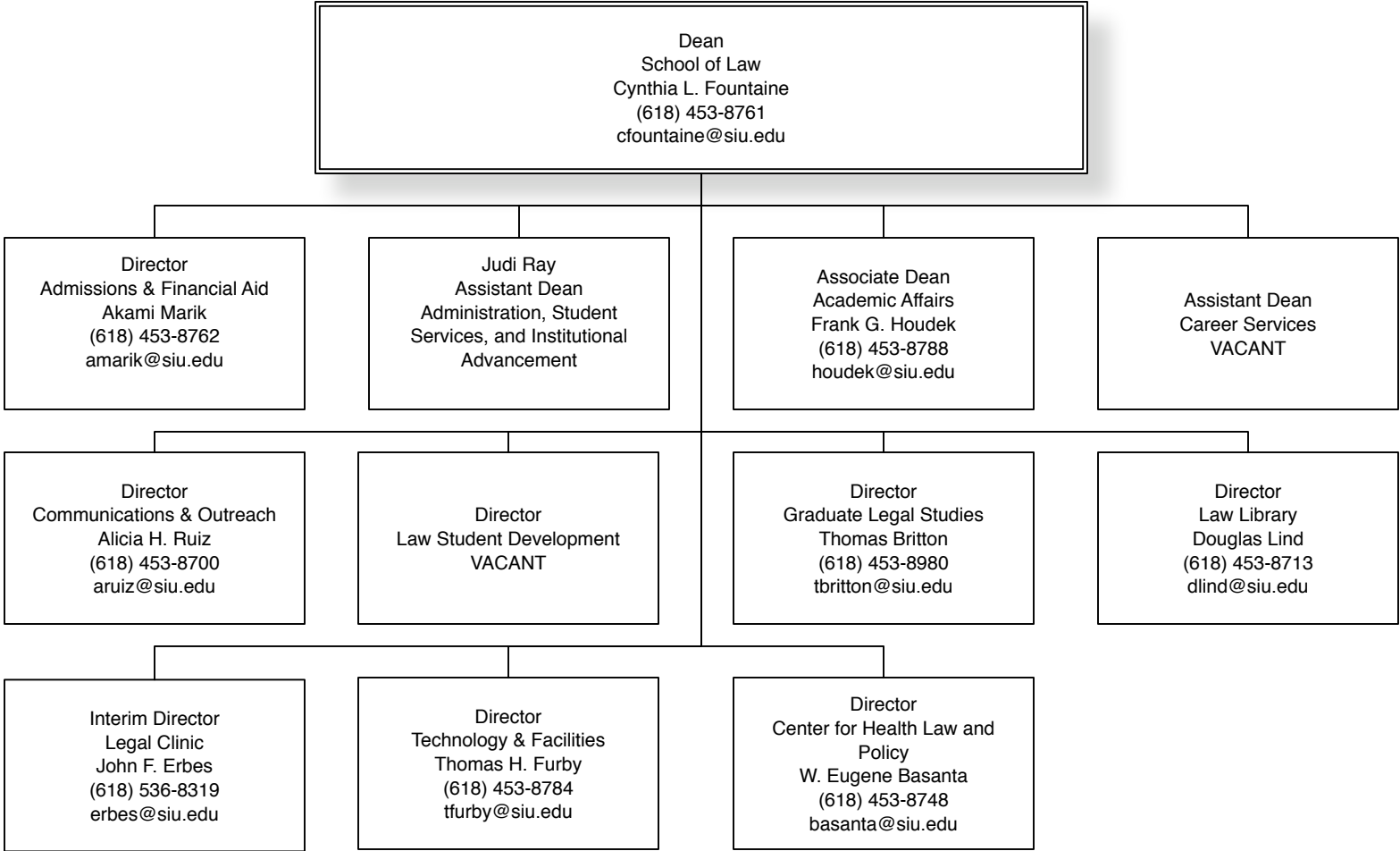
Interim Dean
College of Education and Human Services
John Benshoff
(618) 453-7313
jbenshof@siu.edu



Reports to the Provost and Vice Chancellor



Reports to the Provost and Vice Chancellor



Reports to the Provost and Vice Chancellor

Dean College of Liberal Arts
 Kimberly Kempf-Leonard
 (618) 453-6362
 kleonard@siu.edu

Director Center for Dewey
 Studies
 Larry A. Hickman
 (618) 453-2629
 lhickman@siu.edu

Associate Dean Personnel,
 Budget, & Research
 David DiLalla
 (618) 453-2466
 ddilalla@siu.edu

Chair Anthropology
 Susan M. Ford
 (618) 536-6651
 sford@siu.edu

Director
 School of Art & Design
 Peter Chametzky
 (618) 453-8632
 pchamet@siu.edu

Chair Africana Studies
 Joseph A. Brown
 (618) 453-7147
 jbrownsj@siu.edu

Director Center for
 Archaeological Investigations
 Brian M. Butler
 (618) 453-5031
 bbutler@siu.edu

Assistant to the Dean Student &
 Curricular Affairs
 Anita Hutton
 (618) 453-2466
 mozart@siu.edu

Director
 Center for English as a Second
 Language
 Cheryl Ernst

Director
 School of Music
 Jeanine Wagner
 (618) 536-8742
 jwagner@siu.edu

Chair
 Criminology & Criminal Justice
 Joseph Schafer
 (618) 453-6362

Director Paralegal Studies
 Dan Silver
 (618) 453-1234
 dsilver@siu.edu

Director Computer-Assisted
 Instructional Research Lab and
 New Media Center
 Thomas Thibeault
 (618) 453-5412
 ttbo@siu.edu

Director
 University Museum
 Dona R. Bachman
 (618) 453-5388
 dbachman@siu.edu

Chair
 Foreign Languages & Literatures
 Anne Winston-Allen
 (618) 453-5435
 winston@siu.edu

Chair
 Geography
 Leslie A. Duram
 (618) 453-6084
 duram@siu.edu

Chair History
 Robbie Lieberman
 (618) 453-4391
 hchair@siu.edu

Chair Linguistics
 Peggy Stockdale
 (618) 453-2466
 pstock@siu.edu

Chair Political Science
 Robert Clinton
 (618) 453-3163
 rclinton@siu.edu

Chair Psychology
 Benjamin Rodriguez
 (618) 453-3529

Chair Philosophy
 George E. Schedler
 (618) 453-6641
 geosched@siu.edu

Chair English
 Michael Molino
 (618) 453-6854
 mmolino@siu.edu

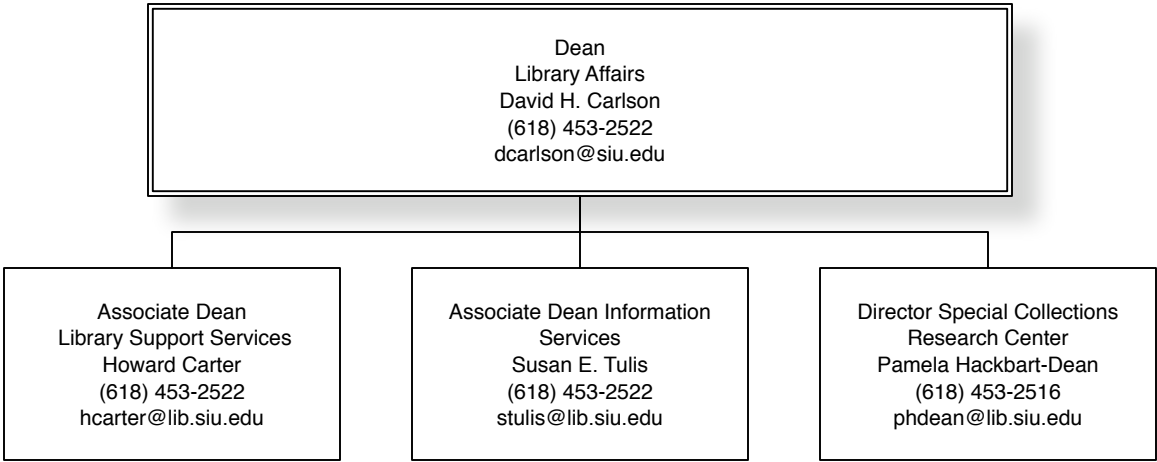
Chair Sociology
 Jennifer Dunn
 (618) 453-7619

Chair Economics
 Subash C. Sharma
 (618) 453-5085
 sharma@siu.edu

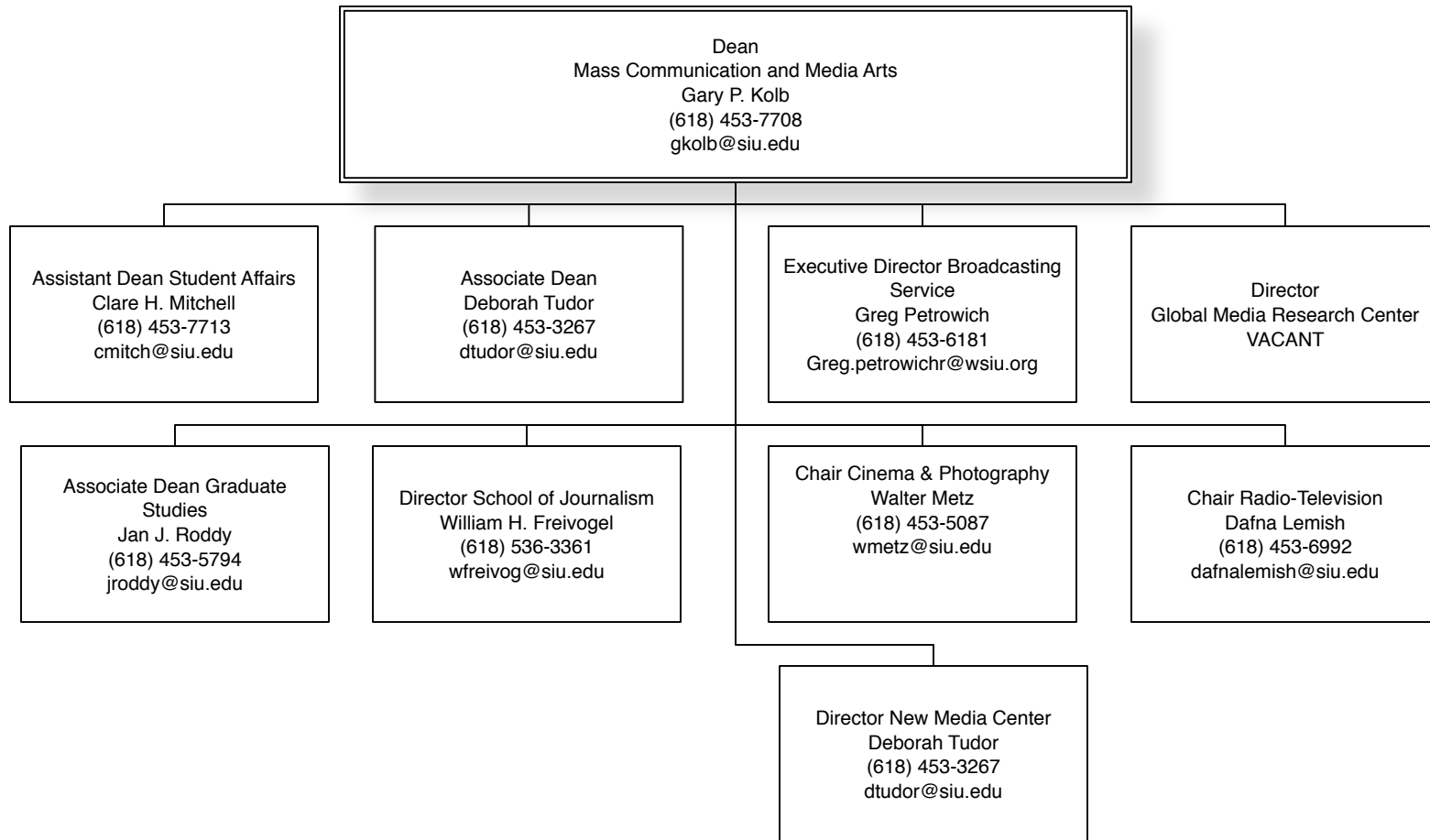
Chair Speech Communication
 Nathan P. Stucky
 (618) 453-2291
 nstucky@siu.edu

Chair Theater
 Thomas Kidd
 (618) 453-7588

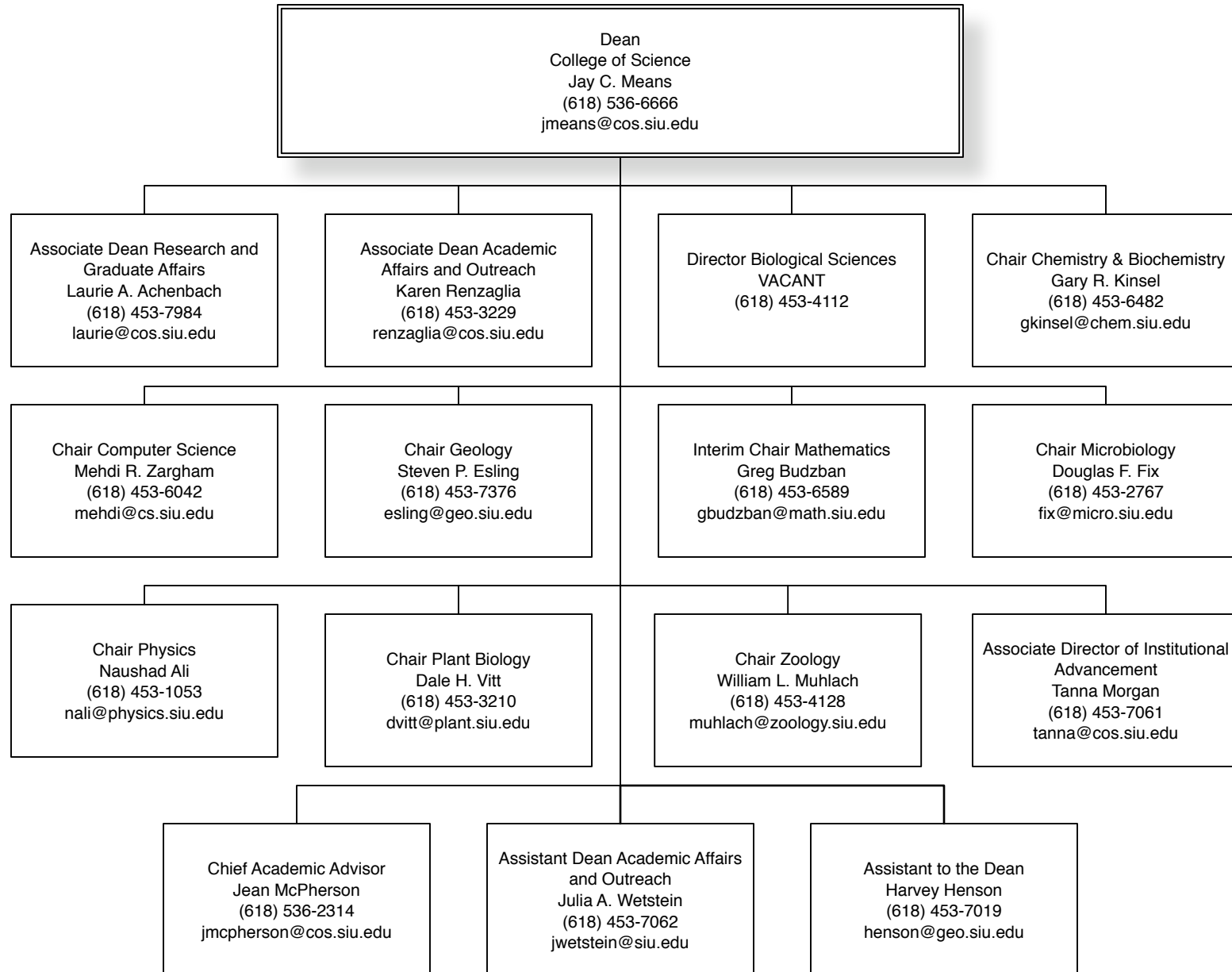
Reports to the Provost and Vice Chancellor



Reports to the Provost and Vice Chancellor



Reports to the Provost and Vice Chancellor



Reports to the Chancellor

Vice Chancellor for Research and Graduate Dean
John A. Koropchak
(618) 453-4551
koropcha@siu.edu

Director Cooperative Wildlife
Research Lab
Eric C. Hellgren
(618) 536-7766
hellgren@siu.edu

Director Meyers Institute for
Interdisciplinary Research in
Organic & Medicinal Chemistry
Cal Y. Meyers
(618) 453-6474
cmeyers@chem.siu.edu

Director Fisheries & Illinois
Aquaculture Center
Jim Garvey
(618) 536-7761
jgarveyr@siu.edu

Director Center for Integrated
Research in Cognitive & Neural
Sciences
Gregory M. Rose
(618) 453-1451
grose@siumed.edu

Acting Director Materials
Technology Center
Tomasz Wiltowski
(618) 536-7525
tomek@siu.edu

Associate Dean & Director Coal
Extraction & Utilization Research
Center
John S. Mead
(618) 536-5521
jmead@siu.edu

Director Center for Delta Studies
VACANT

Director Center for Ecology
Matt R. Whiles
(618) 453-7639
mwhiles@zoology.siu.edu

Co-Director Environmental
Resources & Policy Ph.D.
Program
Steven P. Esling
(618) 453-3351
esling@geo.siu.edu

Co-Director Environmental
Resources & Policy Ph.D.
Program
Christopher L. Lant
(618) 453-6020
clant@siu.edu

Co-Director Environmental
Resources & Policy Ph.D.
Program
Silvia Seechi
(618) 453-1714
sseechi@siu.edu

Associate Vice Chancellor for
Research & Director Office of
Research Development &
Administration
Prudence M. Rice
(618) 453-4540
price@siu.edu

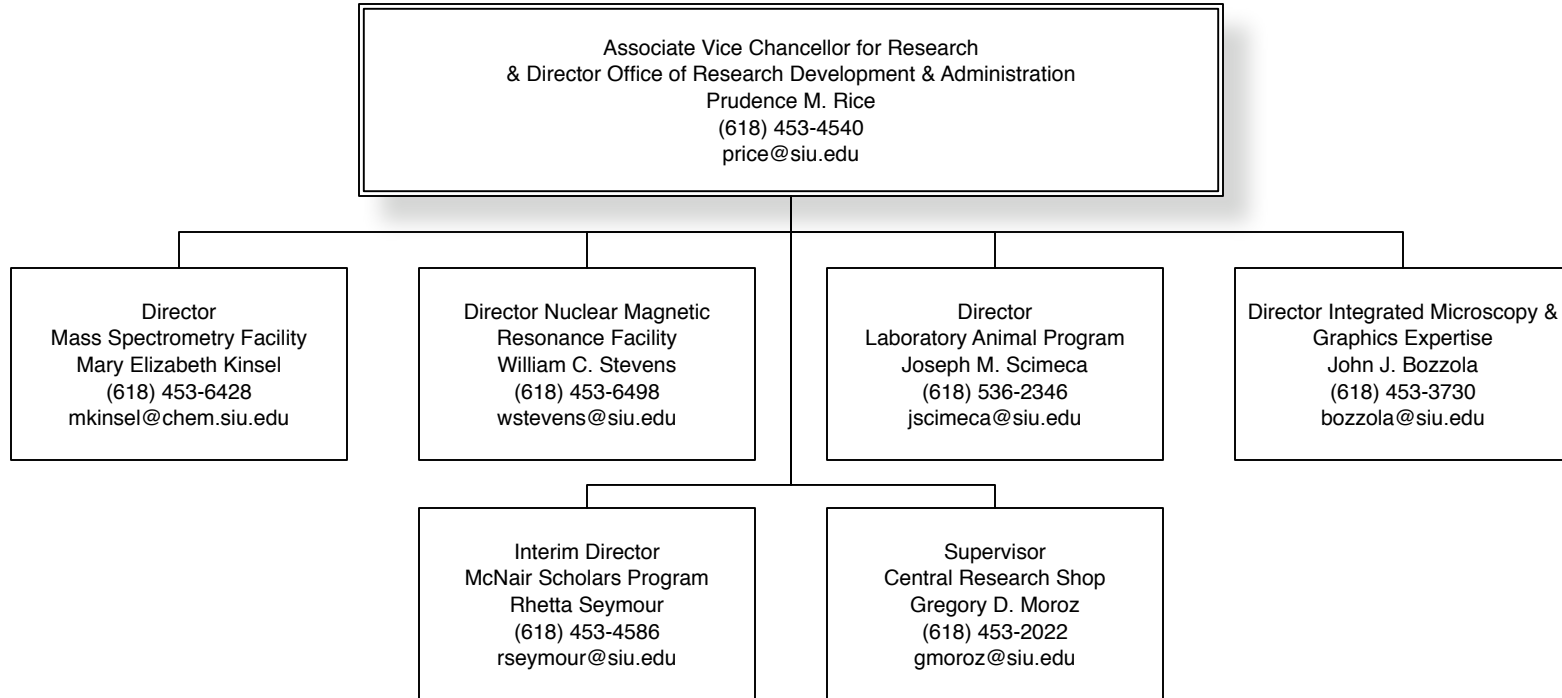
Associate Dean and Director
Graduate School
David L. Wilson
(618) 453-4527
dwilson@siu.edu

Assistant Dean
Patricia A. McNeil
(618) 453-4330
pmcneil@siu.edu

Associate Director
Ratna Sinha
(618) 453-4570
rsinha@siu.edu

Acting Director Center For
Teaching Excellence
F. Dale Brown
(618) 453-4521
dbrown@siu.edu

Reports to Vice Chancellor for Research and Graduate Dean



Reports to the Chancellor

Vice Chancellor for Administration and Finance
Kevin D. Bame
(618) 453-2474
kbame@siu.edu

Executive Director
for Finance
Judith M. Marshall
(618) 536-2626
jmarshal@siu.edu

Director
Human Resources/Payroll
Jennifer L. Watson
(618) 453-6689
jlwatson@siu.edu

Director
Department of Public
Safety
Todd D. Sigler
(618) 453-3771
todds@dps.siu.edu

Director
Plant & Service Operations
Phillip S. Gatton
(618) 453-4172
philg@pso.siu.edu

Director
Labor & Employee
Relations
Brent D. Patton
(618) 453-6677
brentp@siu.edu

Assistant Vice Chancellor
for Auxiliary Services
Lori Lynn Stettler
(618) 453-3496
loris@siu.edu

Director
Event Services
Bryan L. Rives
(618) 453-2787
brives@siu.edu

Director
Accounting Services
VACANT

Director
Center for Environmental
Health & Safety
Paul J. Restivo
(618) 453-7180
restivo@cehs.siu.edu

Director
Procurement Services
Wallace S. Burman
(618) 453-5751
wburman@siu.edu

Director
Recreational Sports
William Ehling
(618) 453-1349
wehling@siu.edu

Interim Director
Housing
Lisa Marks
(618) 453-1067
marks04@siu.edu

Director
Rainbow's End
Darlene Waier
(618) 453-8629
dwaier@siu.edu

Director
Student Health Services
Ted W. Grace
(618) 453-4408
tgrace@siu.edu

Reports to the Chancellor

Vice Chancellor for Institutional Advancement
VACANT

Asst. V.C.; Managing Director
SIU Foundation
Bryan C. Vagner
(618) 453-4913
bvagner@siu.edu

Assoc. Vice Chancellor;
Executive Director,
Alumni Services/SIU Alumni
Association
Michelle Suarez
(618) 453-2408
msuarez@siu.edu

Associate V.C.; Exec. Director
of Development
SIU Foundation
Jeff Lorber
(618) 453-4947
jlorber@siu.edu

Director of Accounts Payable
Accounting Services
Kimberly Hawk
(618) 453-4920
khawk@siu.edu

Director of Gift Accounting
Accounting Services
Marla M. Fuller
(618) 453-4935
mmfuller@siu.edu

Executive Director
Advancement Services
Beth L. Mohlenbrock
(618) 453-4915
bmohlen@siu.edu

Director of Accounting Services-
Springfield Accounting Services
Cindy Moreno
(217) 545-1176
cmoreno@siumed.edu

Treasurer; Interim CEO
SIU Foundation
Elizabeth A. Banycky
(618) 453-4918
lbanyck@siu.edu

Director of Gift & Biographical
Processing
Advancement Services
Linda D. Wright
(618) 453-4939
lindenw@siu.edu

Director, Information Systems
Advancement Services
David B. Schwartz
(618) 453-4925
dschwar@siu.edu

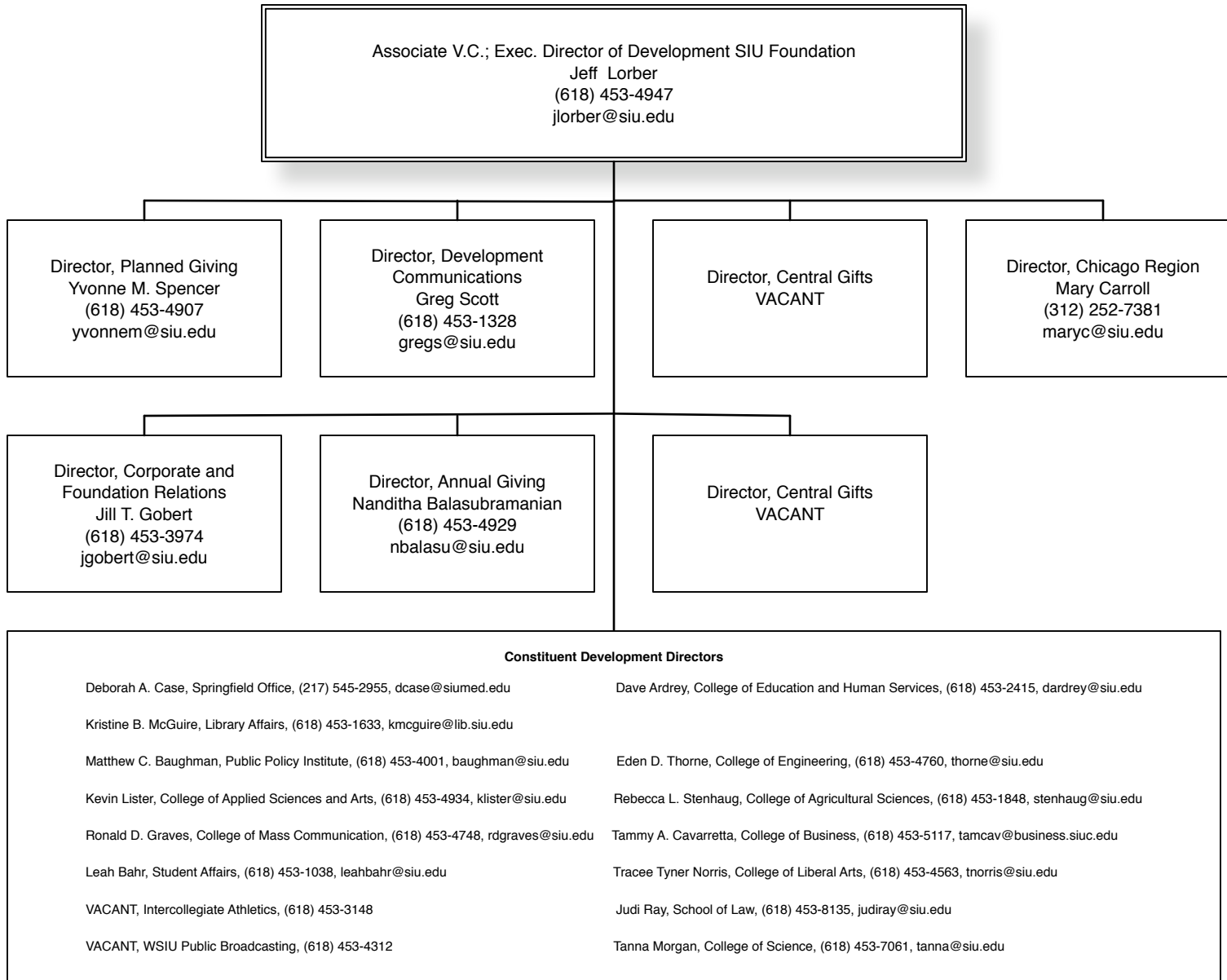
Compliance Officer
Brian Henze
(618) 453-4877
brianh@foundation.siu.edu

Budget Officer Coordinator
Financial Services & Fiduciary
Management
Kristy McClurken
(618) 453-4905
kristym@foundation.siu.edu

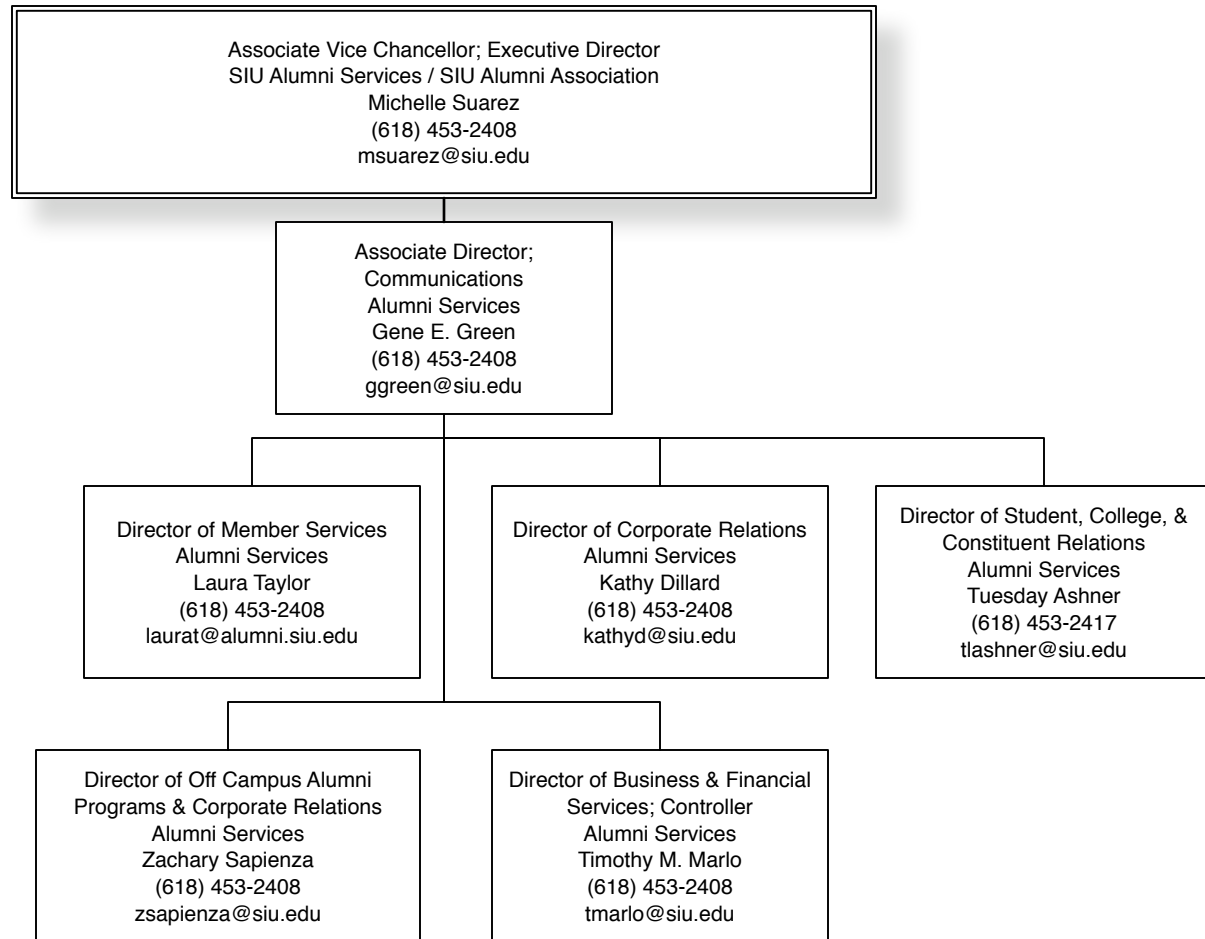
Investment Specialist/Fiduciary
Manager, Financial Services &
Fiduciary Management
Cynthia Ciganovich
(618) 453-4922
ccigano@siu.edu

Director, Research
Advancement Services
Twyla Adkisson-Peak
(618) 453-4917
tadkiss@siu.edu

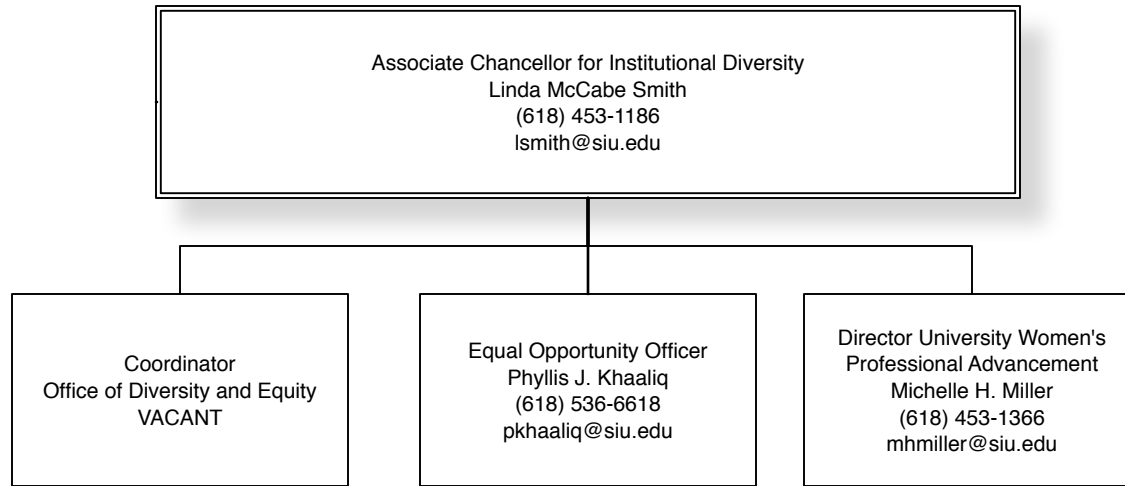
Reports to the Vice Chancellor for Institutional Advancement



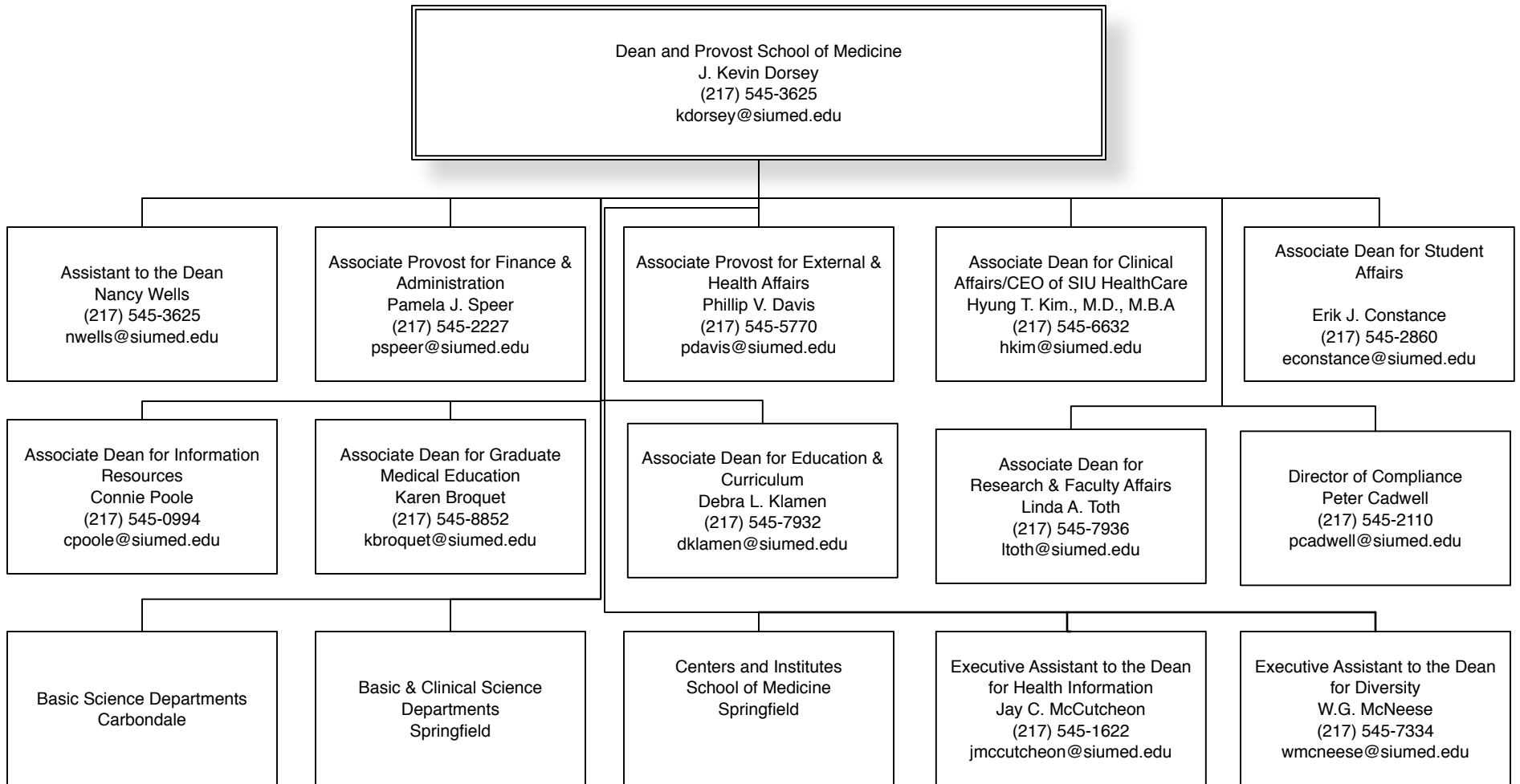
Reports to the Vice Chancellor for Institutional Advancement



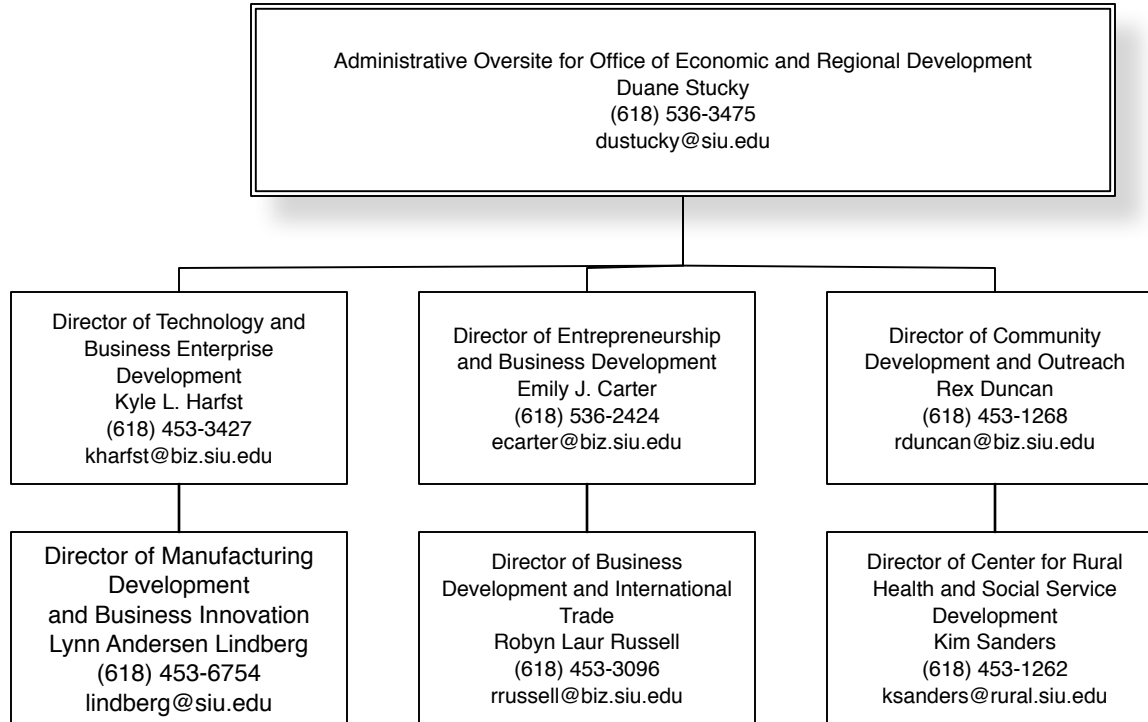
Reports to the Chancellor



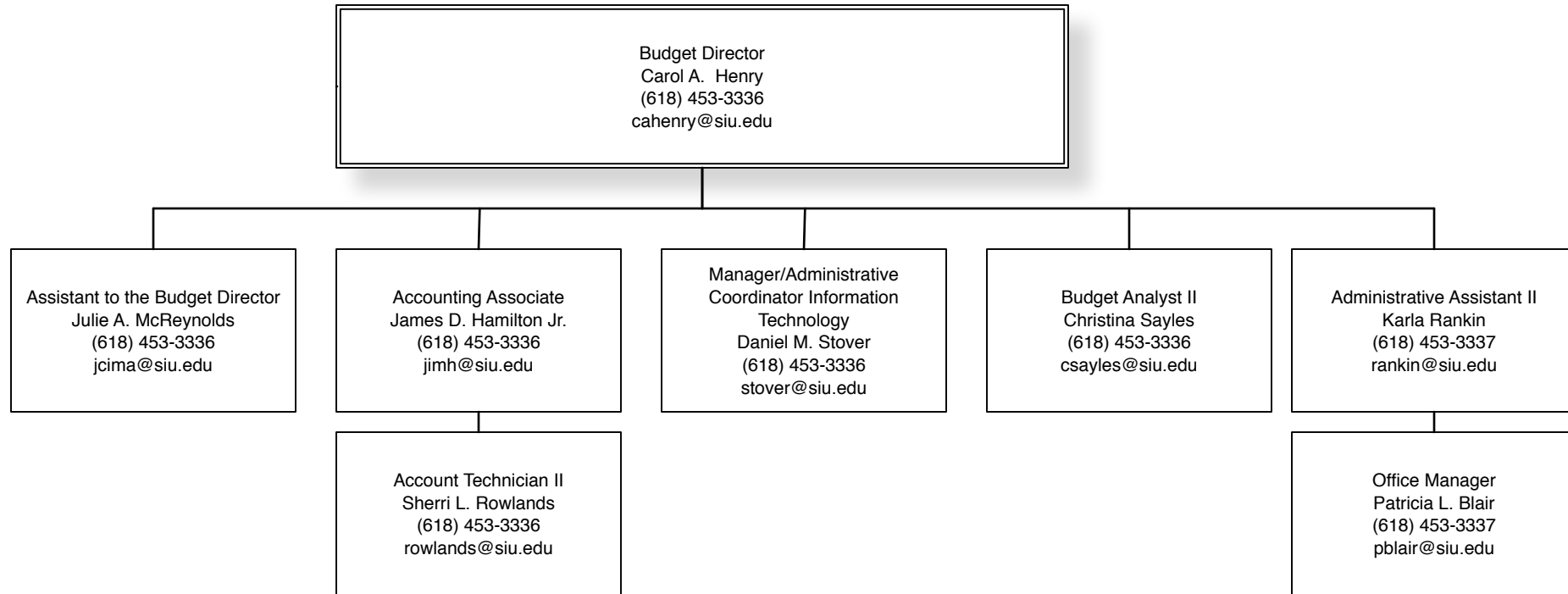
Reports to the Chancellor



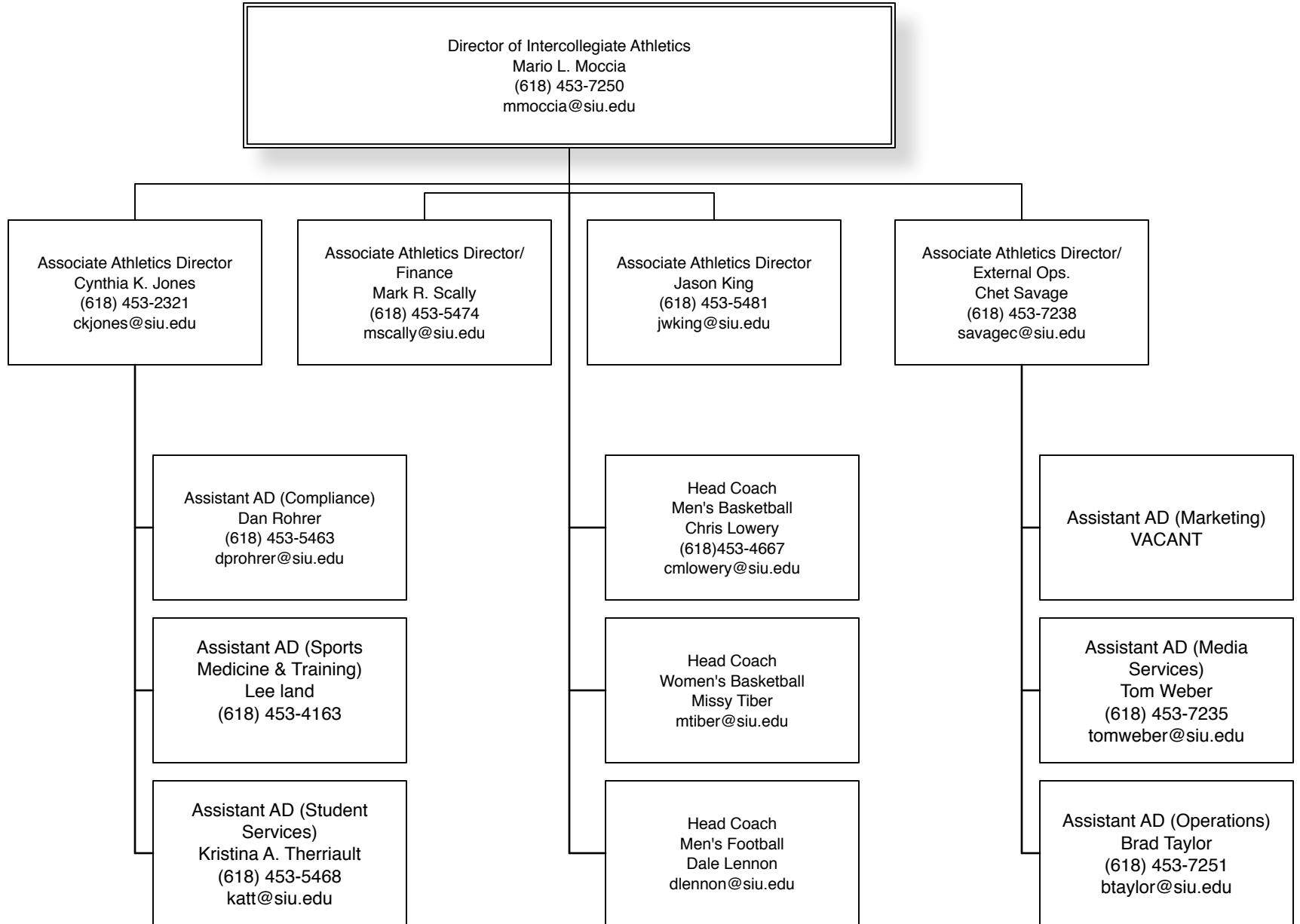
Reports to the Chancellor



Reports to the Chancellor



Reports to the Chancellor



Reports to the Chancellor

